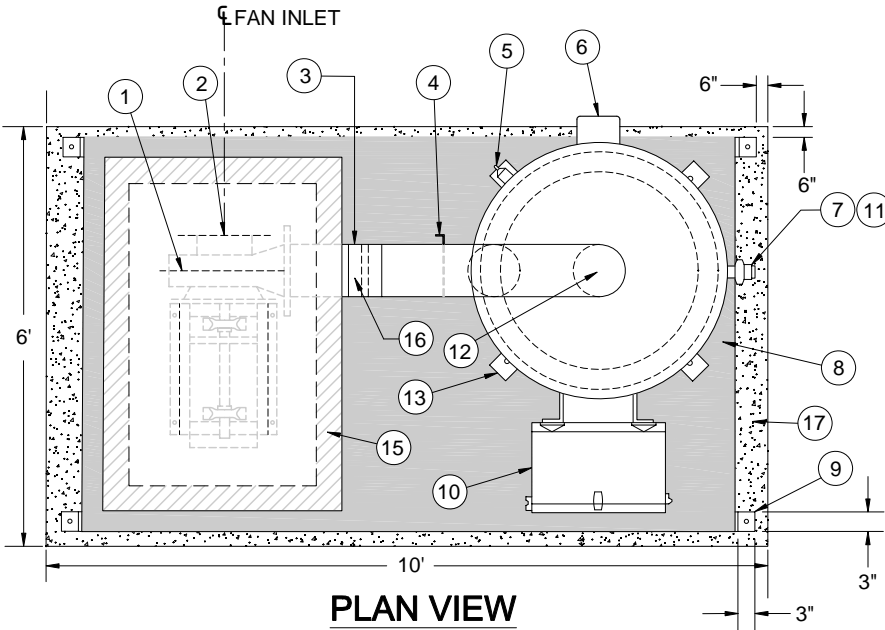


ISSUE DATE JANUARY 1st, 2008

# SECTION 5H

# ODOR CONTROL UNIT





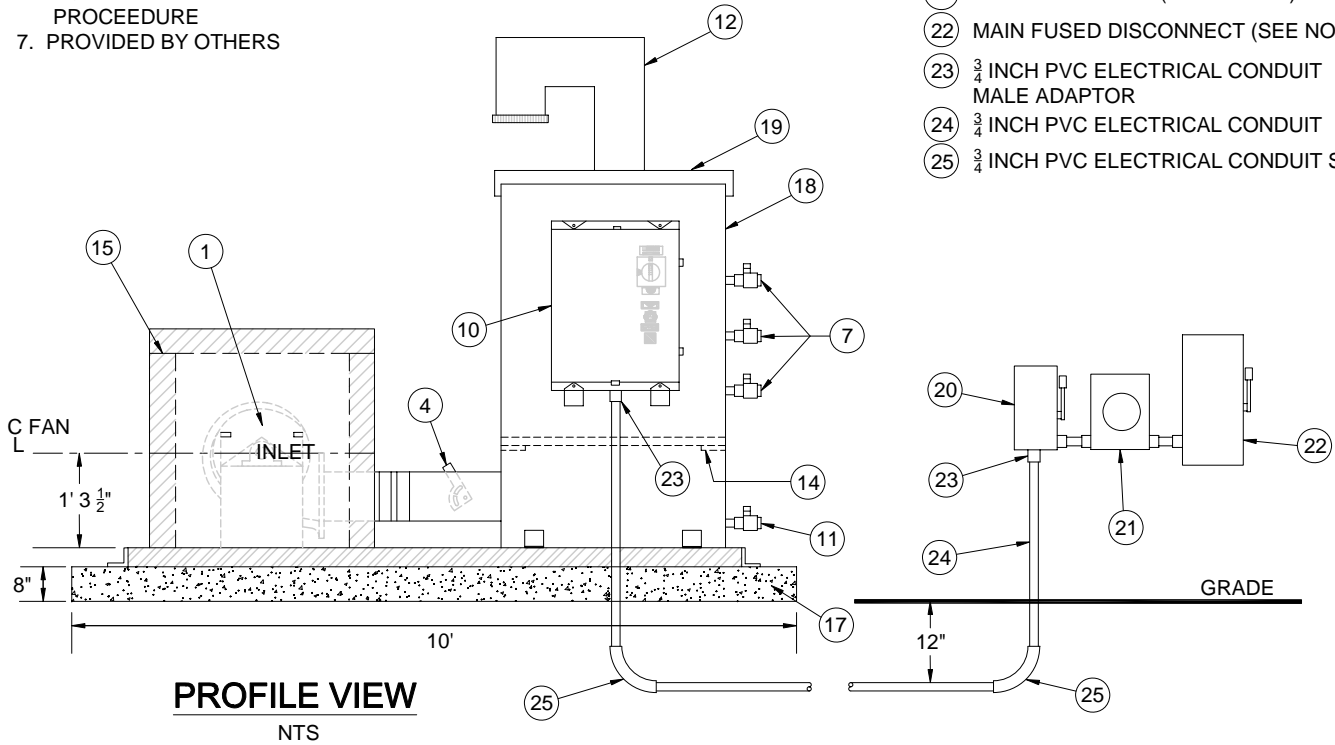
**PLAN VIEW**  
NTS

**NOTES:**

1. \_\_\_\_\_ MANUFACTURER / MODEL #
2. UNIT TO BE INSTALLED PER MANUFACTURES INSTRUCTIONS
3. MIDAS CARBON MEDIA TO BE USED
4. S.S. DISCONNECT SIZED PER MANUFACTURES SPECS
5. ELECTRICAL CONDUIT TO BE MIN 12" BELOW GRADE
6. EQUIPMENT START UP PER MANUFACTURES RECOMMENDED PROCEDURE
7. PROVIDED BY OTHERS

**LEGEND:**

- 1 EXHAUST FAN
- 2 FAN INLET
- 3 PPE OUTLET TRANSITION
- 4 ID DAMPER
- 5 GROUNDING ROD (SEE NOTE 2)
- 6 DIFFERENTIAL PRESSURE GAUGE
- 7 1" SCH 80 PVC SAMPLE BALL VALVE
- 8 EPOXY COATED STEEL SKID
- 9 316 S.S. SKID ANCHOR LUG
- 10 MOTOR CONTROL CABINET W / VFD CONTROLER NEMA 4x SS
- 11 1" SCH 80 PVC DRAIN BALL VALVE
- 12 OUTLET STACK
- 13 316 S.S. CARBON VESSEL ANCHOR LUG
- 14 CARBON SUPPORT GRATING AND SCREEN
- 15 SOUND ENCLOSURE
- 16 FLEXIBLE BOOT WITH S.S. BANDS
- 17 3,000 PSI CONCRETE PAD WITH WIRE MESH
- 18 HDPE VESSEL
- 19 MANWAY
- 20 LOCKABLE S.S. KNIFE SWITCH DISCONNECT
- 21 ELECTRIC METER (SEE NOTE 7)
- 22 MAIN FUSED DISCONNECT (SEE NOTE 7)
- 23 3/4 INCH PVC ELECTRICAL CONDUIT MALE ADAPTOR
- 24 3/4 INCH PVC ELECTRICAL CONDUIT
- 25 3/4 INCH PVC ELECTRICAL CONDUIT SWEEP

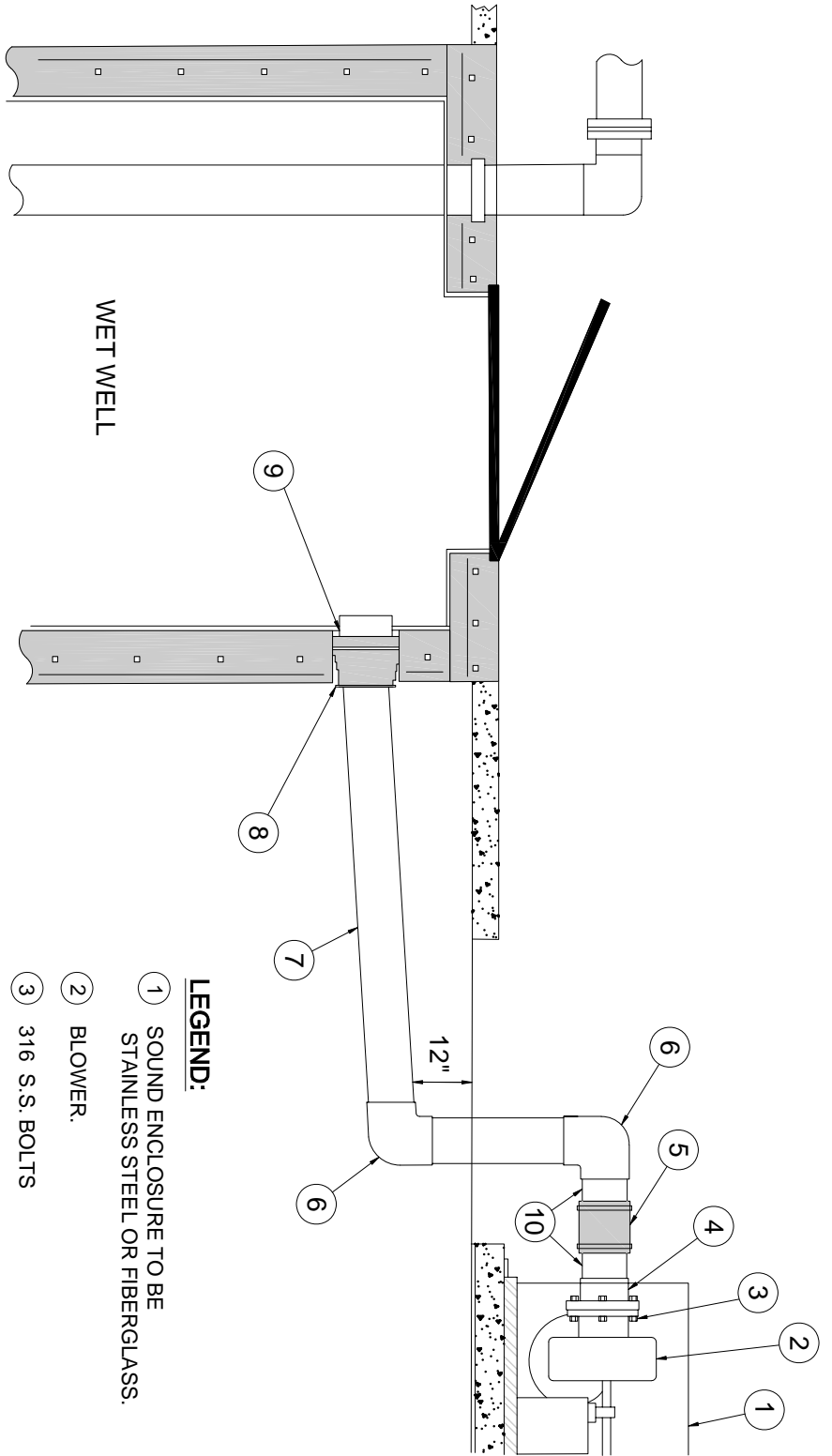


**PROFILE VIEW**  
NTS

DATE: 1/1/2008
DRAWN BY: DJS
APPROVED BY: TGD

**LIFT STATION  
ODOR CONTROL SYSSYEM  
CHARLOTTE COUNTY UTILITIES**

PROVIDED FOR INFORMATIONAL PURPOSES ONLY. NO MODIFICATIONS WITHOUT WRITTEN CCU APPROVAL.
PAGE No. 122
NUMBER: 01-ODR-CNTRL



WET WELL

**LEGEND:**

- ① SOUND ENCLOSURE TO BE STAINLESS STEEL OR FIBERGLASS.
- ② BLOWER.
- ③ 316 S.S. BOLTS
- ④ SCHEDULE 80 PVC SOLVENT WELD FLANGE.
- ⑤ RUBBER COUPLER WITH S.S. BANDS.
- ⑥ SCHEDULE 80 PVC SOLVENT WELD 90 DEGREE ELBOW.
- ⑦ AIR INLET PIPE SCHEDULE 80 PVC WITH NEGATIVE FLOW TO WETWELL. (TYPICAL BUT MAY VARY BASED ON CONFIGURATION.)
- ⑧ ELASTOMETRIC GASKET BOOT WITH S.S. BAND.
- ⑨ NON SHRINK GROUT.
- ⑩ 3"

**GENERAL NOTES:**

- 1. ANNULAR SPACE AROUND PENETRATION TO BE FILLED WITH NON SHRINK GROUT.
- 2. ALL JOINTS AND BENDS TO BE SOLVENT WELD.
- 3. ALL HARDWARE TO BE 316 S.S.

DATE: 1/1/2008
DRAWN BY: DJS
APPROVED BY: TGD

**ODOR CONTROL SYSTEM  
AIR INLET PIPE BLOWER CONNECTION  
CHARLOTTE COUNTY UTILITIES**

PROVIDED FOR INFORMATIONAL PURPOSES ONLY. NO MODIFICATIONS WITHOUT WRITTEN CCU APPROVAL.
PAGE No. 123
NUMBER: 02-ODR-CNTRL-INLET